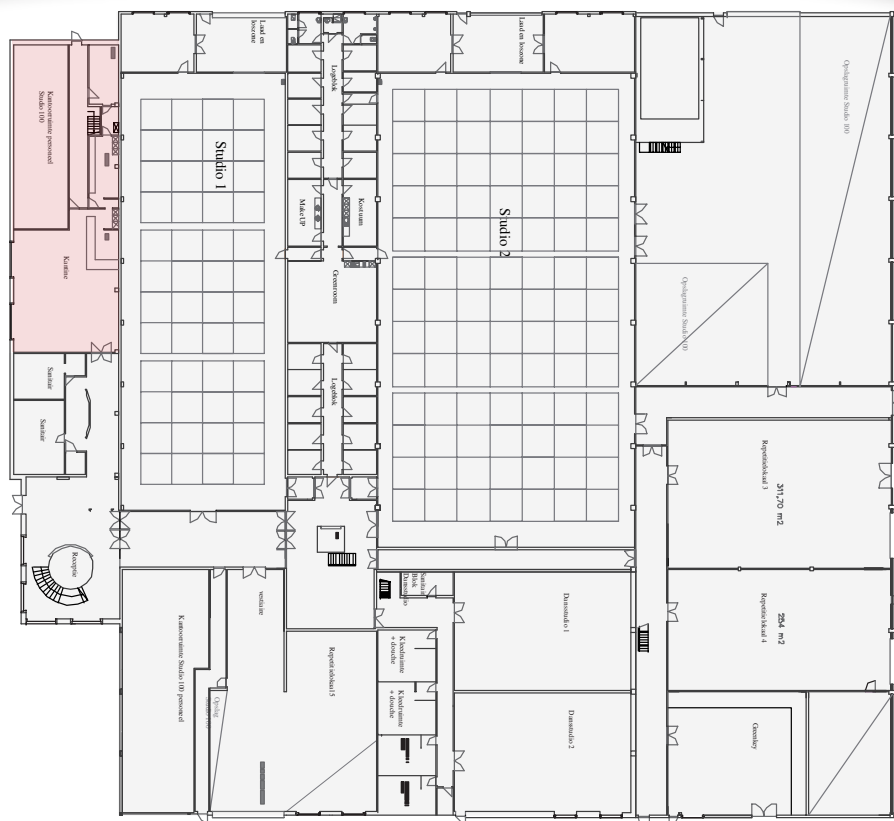


CAFETERIA & KITCHEN



1. General information:

Name of complex: Studio 100 - Cafeteria & Kitchen
 Address: Halfstraat 80
 Postcode: 2627
 City: Schelle
 Telephone: 03 877 60 35
 Fax: 03 877 60 36
 E-mail: Studio100@studio100.be

TECHNICAL DATA

2. Technical data:

2.1 Dimensions:

- Length: 11,80 m
- Width: 10,10 m
- Height: 2,66 m

2.2 Access doors:

- 1,70 (W) x 2,64 (H)
- 0,84 (W) x 2,56 (H)

2.3 Power supply:

- Various electrical sockets

2.4 Floor type:

- Polybeton

2.5 General facilities:

- Fully-equipped kitchen
- Tables and chairs for 100 people

